



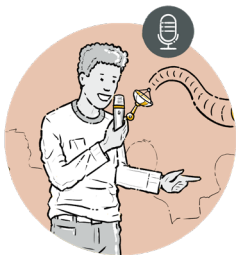
FrontRow Lyrik™

Take audio anywhere

The Lyrik™ amplification solution is a small yet mighty portable system for instruction and audio media to be heard anywhere: in a classroom, outside on a sports field, or even online! The tower has an integrated rechargeable battery and can be connected to a computer or other auxiliary audio source either directly using cables or wirelessly using Bluetooth®. The teacher microphone for Lyrik is lightweight and comfortable and our PrioriTeach feature can automatically mute the auxiliary audio when a teacher speaks.



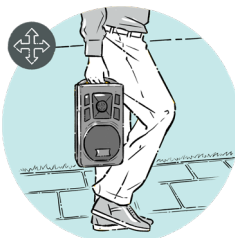
Options



Student microphone helps encourage class participation



Behind-the-neck headset for Phys Ed or on-the-go



Field Case with shoulder strap for field trips, outdoor use, art rooms, or Pre-K

Key Features

- Stream audio over Bluetooth® or direct line input
- Lightweight, weighs only 8.2 pounds (3.7kg)
- Powerful 60W speaker for class & field
- Up to 8 hours of performance per charge
- Pre-programmed for multiple unit installation
- Low, med, high teacher mic volume buttons
- PrioriTeach option mutes music and audio when the mic is used
- Professional XLR mic input for field and stage
- Flip up cradle for mobile phone
- Drop-in charger with LED status
- Up to 96 classrooms with 1 mic or 48 classrooms with 2 mics
- Up to 230 feet (70m) of range (open field)



Lyrik Tower

SPECIFICATIONS

Battery	Lithium-Ion 14.4 V, 5.2Ah
Ambient Temperature	-10°C ~ 50°C / -14°F ~ 122°F
Frequency Response	70Hz – 17kHz
Operating Range Max	30m – 70m / 98ft – 229ft
Output Power	60W (max) / 40W (RMS)
Speaker/Amplifier	5" Neodymium driver + 1" Tweeter / Class D
Carrier Frequency	520 – 544MHz
Receiver	Duo - Two channels for up to 2 mics
Recharge Time	~12 hours
Battery Runtime	7-8 hours
Power	AC charging power supply adapter for full-time operation
AUX In/Out	3.5mm (Line level)
MIC In	1/4" mono or XLR (Mic level -60 dBv)
Bluetooth® Version	3.0
Weight	3.7kg / 8.2lbs
Size (wxdxh)	170 x 201 x 341 mm / 6.9 x 7.9 x 13.4 in
Power Requirements	100~240VAC, 20VDC, 3.25A switching power supply
Battery Life Indicator	4 LED status
Threaded speaker stand mounting hole	5/8" - 27tpi



Teacher Microphone

SPECIFICATIONS

Battery	Lithium Ion 3.7V 1300mAh
Ambient Temperature	-10°C ~ 50°C / -14°F ~ 122°F
Frequency Response	70Hz – 15kHz
Operating Range Max	Hi: >50m/164ft Low: >30m/98ft
RF Power	Hi: <10dBm Low: 3 +/- 2dBm
Carrier Frequency	520 – 544 MHz
Recharge time	4 – 6 hours
Battery runtime	16 – 20 hours typical
Weight	81g / 2.86oz
Size (wxhxd)	52 x 88 x 32 mm / 2.0 x 3.5 x 1.3 in
MIC / AUX IN	3.5mm, mono or stereo



Student Microphone (Optional)

SPECIFICATIONS

Battery	1.2V Ni-MH 1600 mAh
Ambient Temperature	-10°C ~ 50°C / -14°F ~ 122°F
Frequency Response	70Hz – 13kHz
Operating Range Max	Hi: >50m/164ft Low: >30m/98ft
RF Power	Hi: <10dBm Low: <3dBm
Carrier Frequency	520 – 544 MHz
Recharge time	4 – 6 hours
Battery runtime	12 – 15 hours typical
Weight	140g / 4.9oz (including battery)
Size (dia x h)	37 x 200mm / 1.5 x 7.9 in



Drop-in Microphone Charger

SPECIFICATIONS

AC switching adaptor power	Input 100 ~ 240 VAC, Output 5VDC 1A
Charging current	120mA
Charging time (Ni-MH)	6 ~ 8 hours
Size (wxhxd)	120 x 52 x 120 mm / 4.7 x 2.0 x 4.7 in
Weight	255g/9.0oz



CONTACT US



www.centralinc.com | sales@centralinc.com | 800.315.4132

